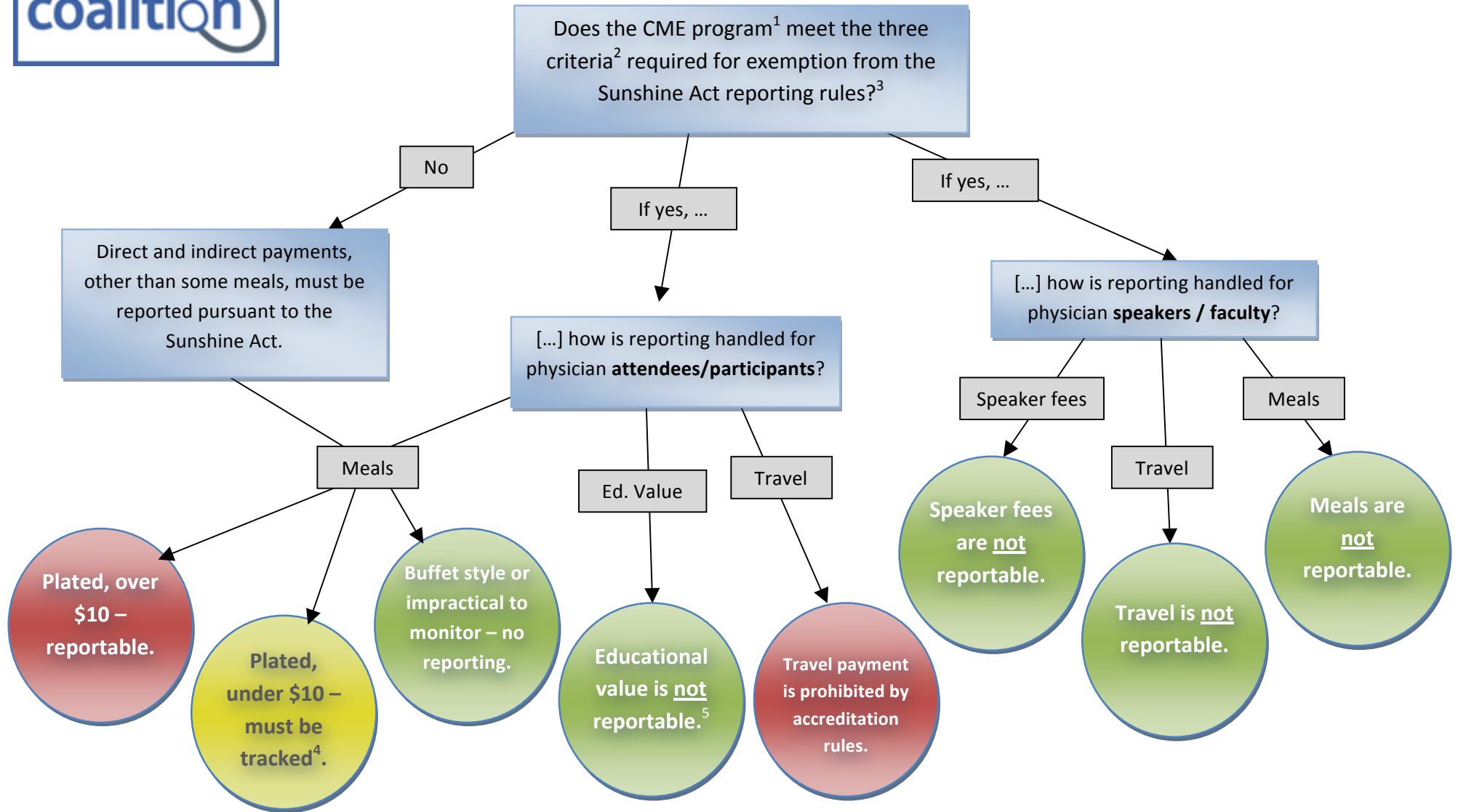




Flow Chart: Sunshine Act Reporting Rules



¹ Program may include live, recorded, or online CME. Providers should be aware of which date a manufacturer reports for any CME-related payment.

² Exempted programs must be accredited by one of five certified accrediting bodies designated in the Final Rule, physician presenters or attendees may not receive direct payment from the applicable manufacturer, and the manufacturer may not select the speaker or attendees nor influence their selection.

³ The Sunshine Act only affects payments made beginning August 1, 2013.

⁴ Payments under \$10 must be tracked, as they become reportable if the aggregate of such transfers of value exceed \$100 in any given year.

⁵ The following conditions should be met for any educational materials provided at a CME program: (1) The educational item or material is directly and significantly related to the accredited CME program for which they attended; (2) The educational item or material was created by the accredited CME provider and specified faculty and staff of that provider; (3) The funds used to create the educational item or material came from the *same* supporter and larger grant for the CME program; and (4) Meet all the requirements under ACCME SCS, Standard 4